



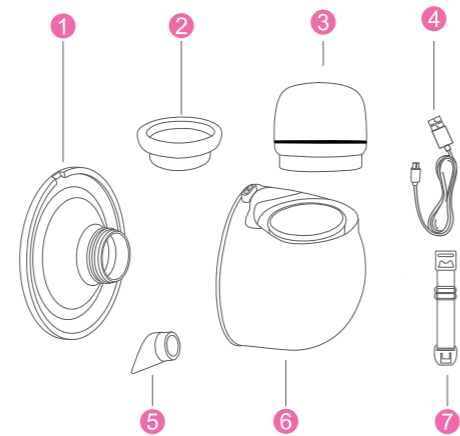
Wearable Wireless Breast Pump

User Manual



Read this user manual carefully before using your electric breast pump, and save the user manual for future reference.

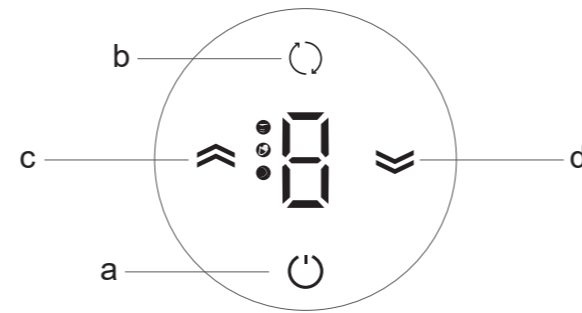
Overview



Parts list

- ① Silicone shield x1
- ② Silicone cylinder x1
- ③ Pump motor x1
- ④ type-c cable x1
- ⑤ Valve x1
- ⑥ Milk collector x1
- ⑦ Bra adjustment buckle x1

Control panel



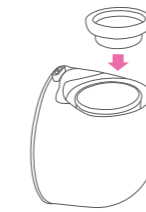
- a. ON/OFF
- b. Change Suction Mode
- c. Increase Suction Level
- d. Lower Suction Level

Specification

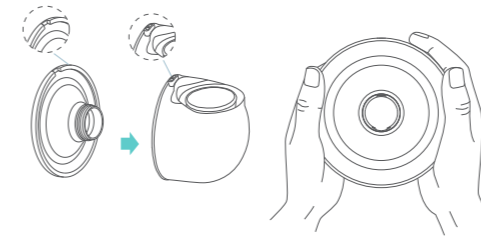
Rated Voltage	5V
Rated Power	3W
Ampere:	1A
Battery Capacity:	900mAh
Power Adapter:	5V- 1A
Auto Power Off:	30 minutes

Assembling

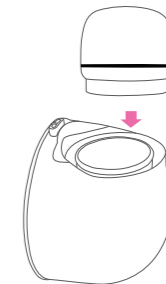
① Put the silicone diaphragm into the linker, and press it with your hands to make the edges fasten tightly to ensure a perfect seal.



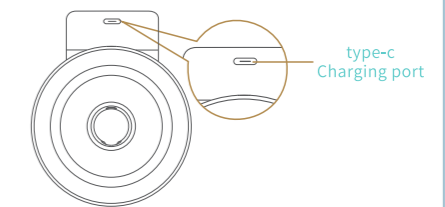
② Install the silicone shield on the milk collector, align the deflector on the horn with the deflector on the milk collector, align the groove on silicone shield in milk collector groove position.



③ Press the pump motor onto the milk collector ensure that it fits perfectly.



④ Connect the type-c charging cable to charge the host.

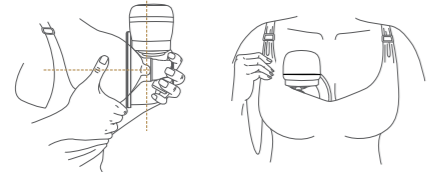


Note

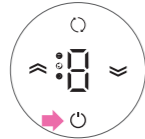
The power adapter is a common standard accessory on the market. This product is not provided. Power adapter specification: 5V= 1A.

TO begin pumping

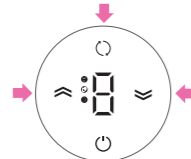
① Press the silicone shield firmly against the breast, leave no gaps and make sure your nipples are centered. Keep it upright. Be careful not to distort the position of the product and the chest, otherwise the breast pump will not have suction.



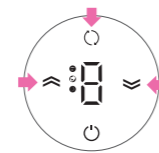
② Lightly press the power button to start the breast pump, and the timing display turns on.



③ Lightly press the "M" key to switch the mode, the display shows "M" for the breast pumping mode. There are 9 levels in this mode. You can select the suction power that makes you comfortable by touching the "+" and "-" keys. During postpartum breastfeeding, breast discomfort such as swelling and lumps are prone to occur. Using this mode can alleviate breast problems.



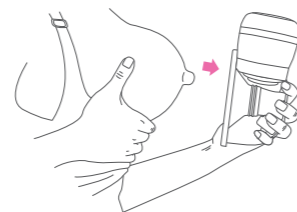
④ Press the "M" key again to switch to the massage mode, the display shows "M" for the massage mode. There are 9 levels in this mode. Each level have 9 short suction and short release plus 1 long suction and long release as a cycle. You can press the "+" and "-" keys to select the suction power that makes you comfortable. In the early postpartum period, the breast duct is not easy to conduct, and the breast can be stimulated by changing the mode to promote breast milk secretion.



- Red light is massage mode
- Purple light is stimulation mode

Tips: The machine has a memory function. When you turn it on again, the machine will automatically enter the working mode and suction position you used last time.

⑤ When you have finished pumping, press the power button to turn off the breast pump, then carefully remove the breast pump from breast.



Cleaning and sterilizing

- For the first time and before each use, you must disassemble, wash and sterilize all the breast pump parts that come into contact with breast milk.
- Never wash or sterilize the pump motor, this component does not come into with your breast milk. You can wipe this part clean with a soft cloth.
- Please use hot water/steam/sterilization pot for sterilization, temperature not exceed 100 degrees.
- Drinking water recommended for cleaning.
- Take care when cleaning the valve and silicone diaphragm, if it gets damaged, your breast pump will not function properly.
- To clean the valve, tub gently between your fingers in warm soapy water. Do not insert objects as this may cause damage.

Sitting position for suction

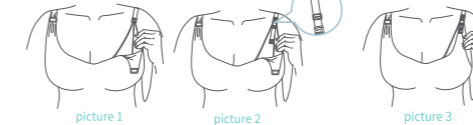
Relax the body, sit in a comfortable chair and lean slightly forward (use cushion to support back). Make sure to keep the breast pump and milk collector upright.



Bra adjustment buckle

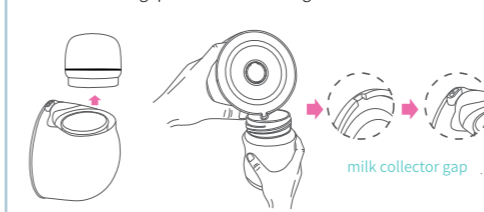
Adjust the length of bra straps, make suction more comfortable.

One end of the bra adjustment buckle hung on the inside buckle of nursing bra. The length of the bra strap can be adjusted by hanging the nursing bra buckle on the other end of the bra adjustment buckle.



Pouring milk

Please keep breast pump upright, and remove the pump motor from pump body carefully, to pour the milk into the bottle, make sure the gap of milk collector against the bottle mouth.



Storing your breast milk

Storing breast milk

Store the breast milk in clean and sterilized storage bag or sealed bottle, and put them in fridge immediately.

Unfreeze breast milk

Put the frozen breast milk in the fridge to unfreeze overnight. In case of any emergency, you can defrost the milk in a bowl of hot water, make sure the bottle stand up, or bottle warmer to heat the milk quickly.

Tips 1

- Only store the breast milk collected by sterilized breast pump.
- Do not freeze the breast milk repeatedly
- Do not mix fresh breast milk with frozen breast milk
- Be sure to discard the remaining breast milk after feeding

Tips 2

- Remember! Always check the milk temperature before feeding.
- Never heat breast milk in microwave as this may destroy valuable nutrients and antibodies.
- Uneven heating may lead to local overheating of the milk, which may cause burns.
- Do not immerse a frozen bottle in boiling water to avoid crack or split.

Note

This product has a built-in lithium battery. When the battery indicator flashes in red, we recommend that you use a certified 5V= 1A adapter to charge the pump motor as soon as possible.