



# Portable Milk Warmer

## User Manual

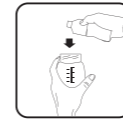


Read this user manual carefully before using your electric breast pump, and save the user manual for future reference.

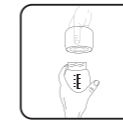
### Introduction

37°C - 50°C adjustable portable milk warmer specially designed for safety and health. Intelligent display of real-time temperature, controlling water humidity at 37°C - 50°C.  
(Note: 37C represents 37°C on the temperature display screen).

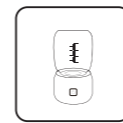
### How to use



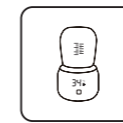
Add water or milk at room temperature to the bottle



Long press 3 seconds to switch on the warmer



Choose the required temperature



After warming the milk, Use it safely for your child

### Cleaning

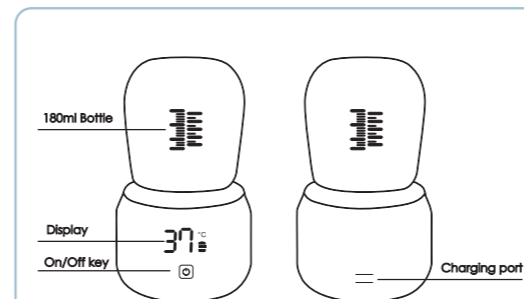
- Clean and sanitize the bottle before first use and after each use.
- Clean the part in touch with the milk with hot water and gentle detergent.
- For the warmer body use wet wipes only.

### Attention

#### For your safety and health, warning!

- This product does not consider the use of unattended children.
- Do not use the parts of this product as toys.
- When not in use, please put the product in a place out of reach of children.
- Before each use, please operate this product according to the method described in the instructions.
- Clean the product before use.
- Do not turn on the machine for dry burning when water is not poured into it. The program is set with dry water protection, and it will automatically shut down
- Shut down the machine immediately after using the product.
- When cleaning the product, turn it off first and then dry the charging port after cleaning.
- Do not immerse the product in water.
- Pay attention to keep the charging cradle clean and avoid dirt, so as not to cause poor charging contact.
- When not in use, do not place it in direct light or near heat for a long time, otherwise it may reduce product utility.
- Charge the product with a certified power adapter (5V=2A or 3A) to avoid unstable charging and accidents.
- This warming cup has a built-in polymer rechargeable battery. It is prohibited to place it in the microwave oven or dispose of it in fire.
- Unplug the charging head after fully charged. Long-time charging may cause fire and other safety accidents.

### Assembling



### Specification

Rated Voltage	7.4V
Rated Power	55W
Ampere:	7.5A
Battery Capacity:	5000mAh