



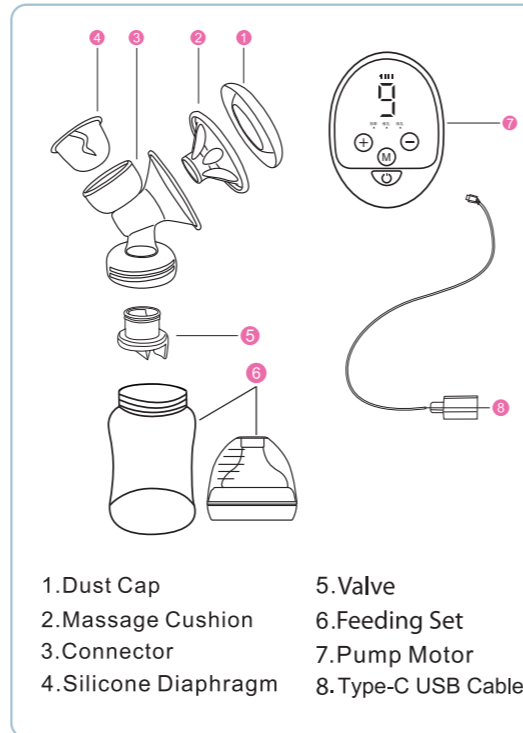
Chargeable Digital Breast Pump

User Manual



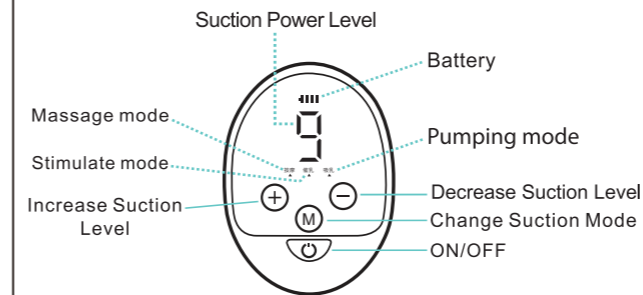
Read this user manual carefully before using your electric breast pump, and save the user manual for future reference.

Overview



- 1. Dust Cap
- 2. Massage Cushion
- 3. Connector
- 4. Silicone Diaphragm
- 5. Valve
- 6. Feeding Set
- 7. Pump Motor
- 8. Type-C USB Cable

Control panel



Specification

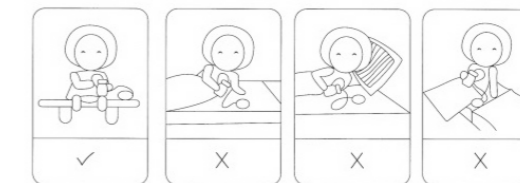
Rated Voltage	5V
Rated Power	3W
Ampere	1 A
Battery Capacity	1600 mAh
Power Adapter	5V - 1A
Auto Power Off	30 Minutes

Product Features:

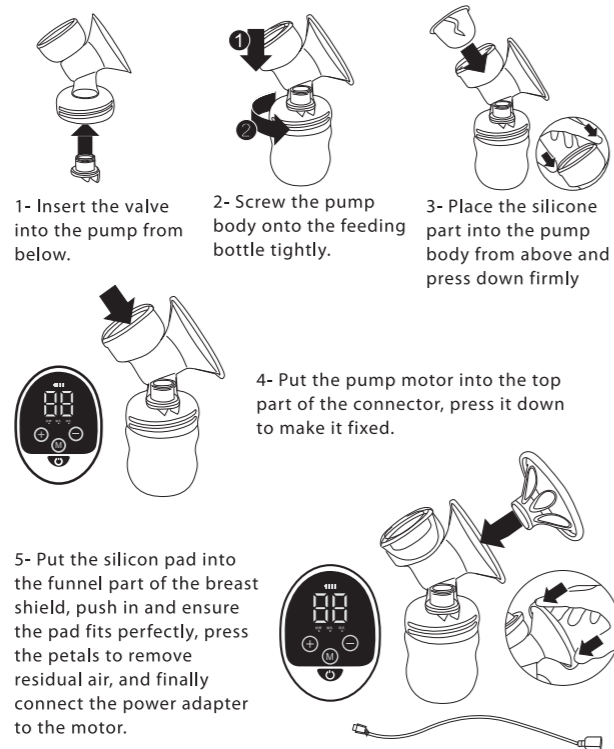
Breast milk contains a variety of antibodies. Newborns can obtain immunity from breast milk. Breast milk is the best choice for baby growth, But sometimes it is inconvenient to feed your baby directly, The breast pump can provide convenience for you, like natural sucking, and soft breast silicone can massage the breast, which can reduce pain during breastfeeding and effectively overcome nipple retraction.

- Innovative design breaks through the traditional way of sucking.
- Square with ergonomic design, like a baby's gentle sucking.
- BPA Free

Please Keep the Right Posture



Assembling



1- Insert the valve into the pump from below.

2- Screw the pump body onto the feeding bottle tightly.

3- Place the silicone part into the pump body from above and press down firmly

4- Put the pump motor into the top part of the connector, press it down to make it fixed.

5- Put the silicon pad into the funnel part of the breast shield, push in and ensure the pad fits perfectly, press the petals to remove residual air, and finally connect the power adapter to the motor.

How to use:

- 1- Wash your hands thoroughly and keep your breast clean.
 - 2- Relax and sit in a comfortable chair (you can place a back cushion if necessary). Remember to put a glass of water by your side.
 - 3- Hold your breast gently to match the trumpet of the breast pump with the breast and ensure that the nipple is in the center.
 - 4- Choose the appropriate cup according to the size of your nipple.
 - 5- Press on / off bottom, lactation mode is activated, Press the "+" and "-" keys to adjust the strength of massage and suction modes, when milk begins to flow out press the mode key to switch pumping mode.
- Note:** You don't need to use the maximum suction. Just choose the suction that makes you feel comfortable.
- 6- After pumping, turn off the breast pump and then carefully remove the breast pump from your breast.
 - 7- Unscrew the feeding bottle from the breast pump to prepare for nursing/storage.
 - 8- Disassemble the breast pump components and clean them according to the cleaning instructions.
 - 9- Unplug the pump motor and keep all parts dry.

Note

Working time of the pump is 30 minutes, otherwise, the pump will turn off automatically

Cleaning and sterilizing

- For the first time and before each use, you must disassemble the pump to wash and sanitize all the parts that come into contact with the breast milk.
- Never wash or sanitize the pump motor, You can wipe this part with a clean, soft cloth.
- Clean the product with a bottle brush using warm water and mild detergent.
- It can be sanitized by putting it in hot water for 5 minutes, but be careful not to add the parts to the water while it is boiling. Let the water calm down first, then add the parts to sanitize.
- Take care when cleaning the valve and silicone diaphragm, as damage to these parts will prevent the breast pump from functioning properly.
- To clean the valve, rub it gently between your fingers in warm, soapy water. Do not insert any objects as this may cause damage.

Note

The power adapter is a common standard accessory on the market. This product is not provided. Power adapter specification: 5V = 1A.

Storing your breast milk

Storing breast milk

Store the breast milk in clean and sterilized storage bag or sealed bottle, and put them in fridge immediately.

Unfreeze breast milk

Put the frozen breast milk in the fridge to unfreeze overnight. In case of any emergency, you can defrost the milk in a bowl of hot water, make sure the bottle stand up, or bottle warmer to heat the milk quickly.

Tips 1

- Only store the breast milk collected by sterilized breast pump.
- Do not freeze the breast milk repeatedly
- Do not mix fresh breast milk with frozen breast milk
- Be sure to discard the remaining breast milk after feeding

Tips 2

- Remember ! Always check the milk temperature before feeding.
- Never heat breast milk in microwave as this may destroy valuable nutrients and antibodies.
- Uneven heating may lead to local overheating of the milk, which may cause burns.
- Do not immerse a frozen bottle in boiling water to avoid crack or split.

Note

This product has a built-in lithium battery. When the battery indicator flashes in red, we recommend that you use a certified 5V = 1A adapter to charge the pump motor as soon as possible.